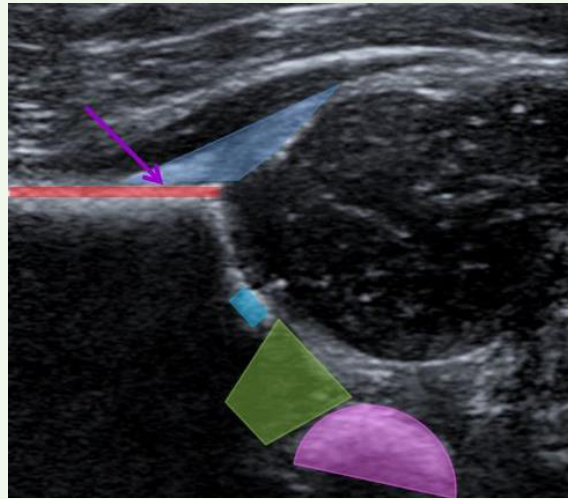
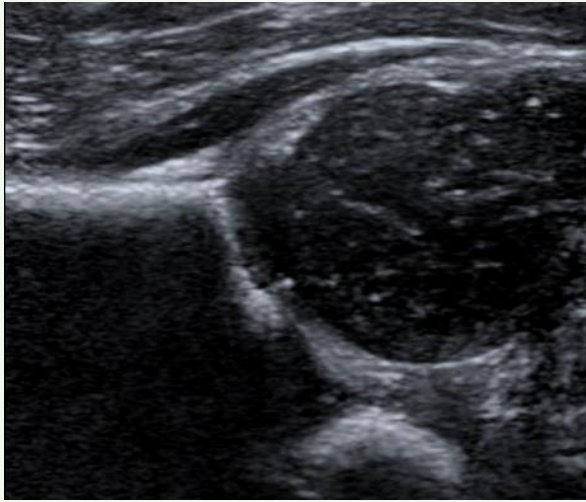


# SONOGRAPHY OF THE HIP (DDH)

## Normal Coronal View & Required Landmarks

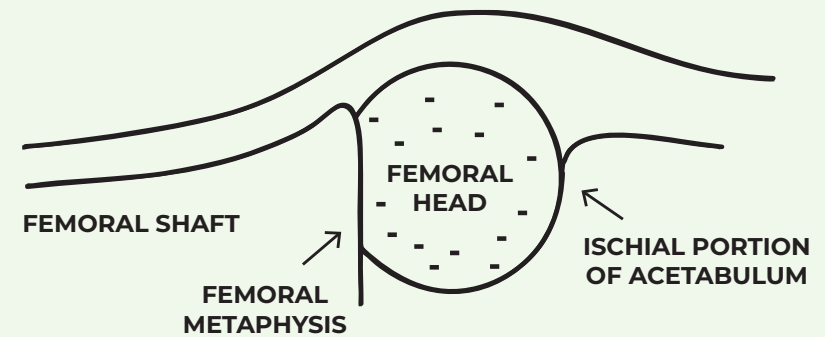
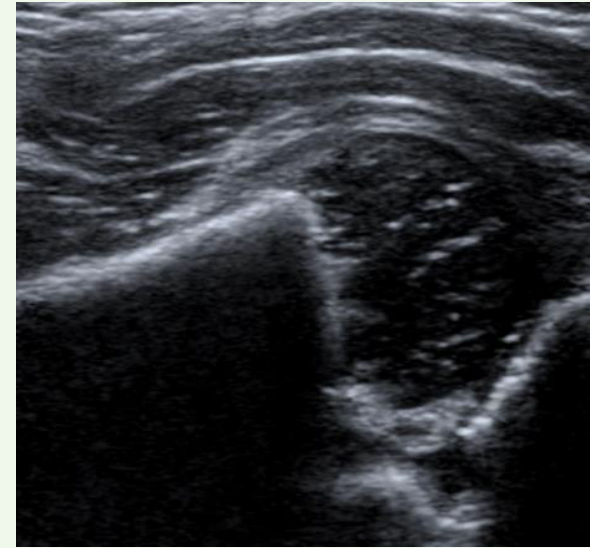


Correct mid-acetabular plane when the following landmarks are visualised simultaneously:

- Ilium (straight with clear demarcation of triangular cartilage edge)
- Triradiate cartilage
- Acetabular labrum (triangular cartilage)
- Os Ilium (required for alpha angle measurement)
- Ischium (approximately 6 o'clock position in relation to femoral head)

Nb. Required landmarks are the same with the leg flexed to 90° or with the leg in the neutral position.

## Normal Transverse View



The metaphysis of the femoral shaft and the ischium create a U shape

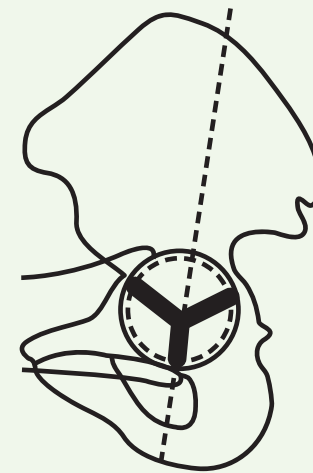
## Transducer Position



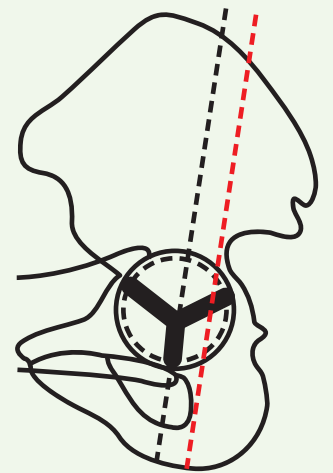
Transducer aligned with body



Incorrect Position (too inferior)



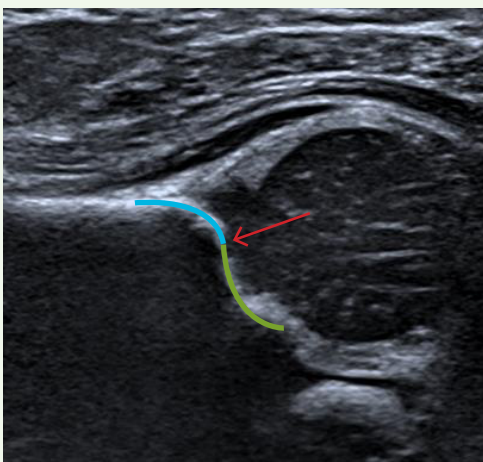
Through mid-portion of acetabulum



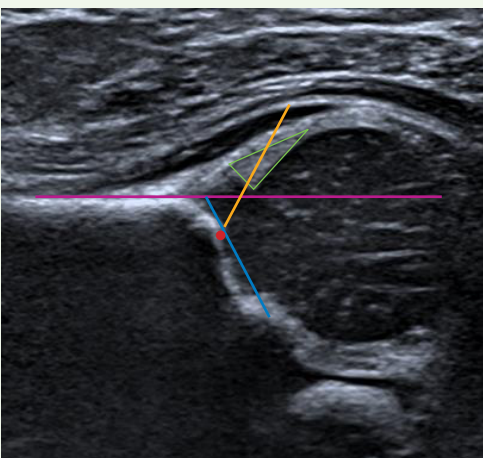
Incorrect plane (too posterior)

## Graf Angles

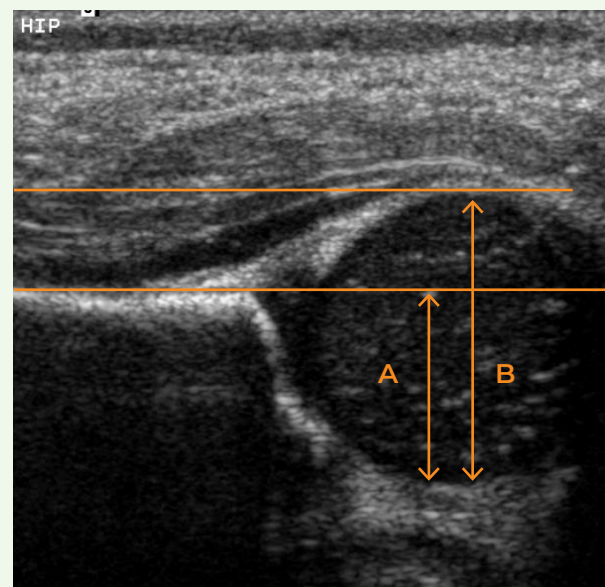
Bony Rim Measurement Point  
Exact point of convexity to concavity



Base Line – along the echo of the straight ilium  
Bony Roof Line - Inferior rim of Os Ilium through bony rim point  
Cartilage Roof Line - Bony rim through the centre of the acetabular labrum



## Femoral Head Coverage



$$A/B \times 100 = \% \text{ FHC}$$

## Abnormal Transverse View (dislocated femoral head)

